

UltraClean Mechanical Install & Owner's Manual



STATEMENT OF WARRANTY

UltraFabric, RapidRoll 230, RapidRoll 355, RapidRoll 670 High Speed Doors

ONE-YEAR WARRANTY ON MECHANICAL AND ELECTRICAL COMPONENTS

- **Albany Door Systems** warrants to the original owner of the door that the mechanical and electrical components will be free from defects in material and workmanship for a period of **one (1) year** from the date of shipment. Vinyl fabric material, mesh screen material and transparent (PVC) polyvinyl chloride material is warranted for **one (1) year**. Two (2) ply panel material is warranted for **two (2) years** and three (3) ply panel material is warranted for **three (3) years**.
- Only defects brought to the attention of **Albany Door Systems** during the warranty period will be covered by this warranty.
- **Albany Door Systems** will replace component parts covered by this warranty, which are found to be defective upon inspection by an **Albany Door Systems** representative. Installation or use of parts other than those authorized by **Albany Door Systems** will void this warranty.
- PARTS AND ASSEMBLIES sold separately by **Albany Door Systems** that fail due to defects in material or workmanship within **ninety (90) days** from the date of shipment will be replaced under warranty provided installation has been carried out in accordance with all **Albany Door Systems** procedures. This warranty is limited to providing a replacement part only. This warranty does not cover freight, special charges, or any costs associated with the installation of the replacement part.
- This warranty covers material failure under normal wear conditions; it does not cover damage caused by collision or other abuse of the product. Adjustments made to the control panel or to the mechanical operation of the door without the authorization of **Albany Door Systems** will void this warranty. Any changes made to product configuration without the express written approval from Albany Door Systems may null and void this warranty.
- **Albany Door Systems'** obligations under this warranty are limited to repairing or replacing the defective part including labor and **Albany Door Systems** shall not be responsible for any other losses or damages due to the operation of any door or parts covered by this warranty. Warranty parts will be shipped regular ground freight at the expense of Albany Door Systems.
- This warranty shall be void in its entirety if the failure of any product shall be caused by any installation, operation, or maintenance of the product which does not conform with the requirements set forth by the seller in the applicable product manuals or is in the result of any cause other than a defect in the material or workmanship of the product.
- No other oral or written representations made by **Albany Door Systems** or its agents are a part of this warranty unless specifically set forth in writing by an authorized **Albany Door Systems** official.

THE ABOVE SET FORTH WARRANTY IS SELLER'S SOLE WARRANTY. SELLER MAKES NO OTHER WARRANTY OF ANY KIND WHATSOEVER, EXPRESSED OR IMPLIED; AND ALL IMPLIED WARRANTIES OF MERCHANTABILITY AND FITNESS FOR A PARTICULAR PURPOSE WHICH EXCEED THE AFORESTATED OBLIGATION ARE HEREBY DISCLAIMED BY SELLER AND EXCLUDED FROM THIS AGREEMENT.

WARNING

Do not install, operate or service the product unless you have read and understand the safety practices, warnings, installation and maintenance instructions contained in this manual.

INTRODUCTION

The contents of this manual are designed to help you install and setup Albany UltraClean™ high speed doors. **DO NOT operate or perform maintenance on the high speed door unless you have read through the instructions in this manual.**



The safety alert symbol is used to identify safety information about hazards that can result in personal injury. A signal word (DANGER, WARNING, or CAUTION) is used with the safety alert symbol to indicate the likelihood and the potential severity of injury. In addition, a hazard symbol may be used to represent the type of hazard.



DANGER indicates a hazard that, if not avoided, will result in death or serious injury.



WARNING indicates a hazard that, if not avoided, could result in death or serious injury.



CAUTION indicates a hazard that, if not avoided, might result in minor or moderate injury.



CAUTION, when used without the alert symbol, indicates a situation that could result in damage to the door.



NOTICE is used to inform you of a method, reference, or procedure that could assist with specific operations or procedures.

Other symbols that may be used in this manual are:



Lock Out / Tag Out



Crushing



Fire



Shock



Read Manual

DOOR INSTALLATION

WARNING

Improper installation of anchoring devices or installation into aged or unsound concrete block, or other wall material may result in premature wear, product failure, property damage, or serious personal injury.

WARNING



Lock-Out Tag-out all electrical power supplied to the door before making any electrical installations or connections. Also Lock-out Tag-out any equipment near the installation site if that equipment may be inadvertently operated into the area used to assemble and install the door. Failure to properly de-energize electrical circuits and disable equipment during installation and/or maintenance could result in death or serious injury.

WARNING



Use proper lifting equipment and techniques. Properly secure all loads. Failure to properly secure all lifting loads could result in death or serious injury.



Secure the work area so that persons not working directly on the installation do not enter the work area.

SITE PREPARATION

Electrical Supply

Qualified electrician must make all electrical mountings and connections in accordance with all applicable regulating body(s) electrical codes and standards. See applicable electrical manual for specifications and wiring instructions.

Door Opening

1. Are the door jambs and support wall structurally sound providing a flat surface for the side columns to mount against?
2. Check the width and height of the door opening and verify the measurements against the dimensions of the door.
3. Is the opening square? Plumb?
4. Is the floor level across the opening?

Make all necessary structural repairs and improvements to provide a “yes” answer to each of the questions above.

TOOLS AND MATERIALS REQUIRED

Personnel

- Two people to install the door
- One person qualified to operate forklift, hoist, or crane
- Once electrician to install and connect the control panel and all electrical wiring

Tools

- Assorted wrenches
- Tape measure
- Carpenter’s square
- Level (4ft minimum recommended)
- Lifting device (fork lift, hoist, crane)

- Lifting Straps
- 2 ladders or personnel lifts (tall enough to reach above the door head)
- Other tools as needed for the type of anchoring chosen

Materials

- Anchors appropriate for the type of wall the door and accessories are to be installed onto. Albany Doors recommends through-bolting doors whenever possible.
- Wire as specified on the electrical schematic
- Electrical supplies needed to comply with all regulating body electrical codes and standards.

UNPACKING AND PREPARING

1. Inspect and unpack the components. Report any damage immediately to Albany at (262) 268-9885. Refer to the serial number tag located on the right door column.
2. DO NOT cut the banding which holds the door in a roll until instructed to do so in a later procedure.

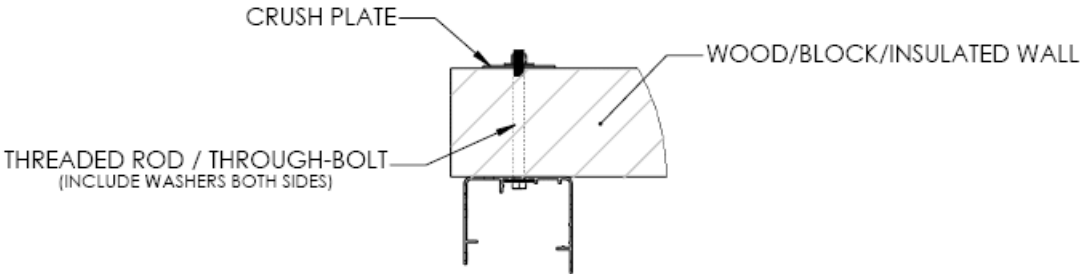
CAUTION

The door panel and roll assembly could be damaged. Use evenly spaced padded supports to prevent rips, tears, or bending of the roll assembly. Failure to protect the roll assembly could result in damage to the door.

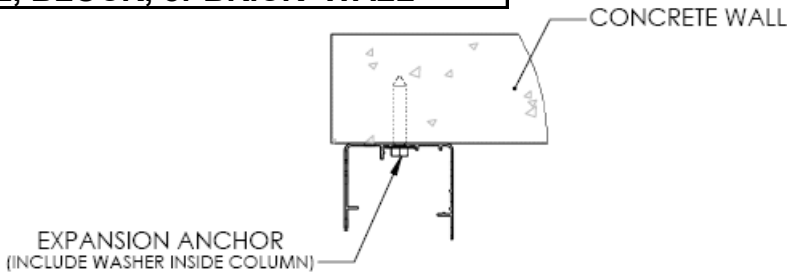
WALL ANCHORING GUIDE

Albany Doors does not supply hardware for mounting the door to the wall. Use proper hardware best suited for each particular door installation. Some examples are shown below. It is the responsibility of the door owner to ensure that the wall material is strong enough to support the forces of the door and all anchoring hardware. In general, Albany Doors recommends through-bolting whenever possible using 1/2 inch diameter bolts/threaded-rods or 1/2 inch diameter concrete expansion anchors.

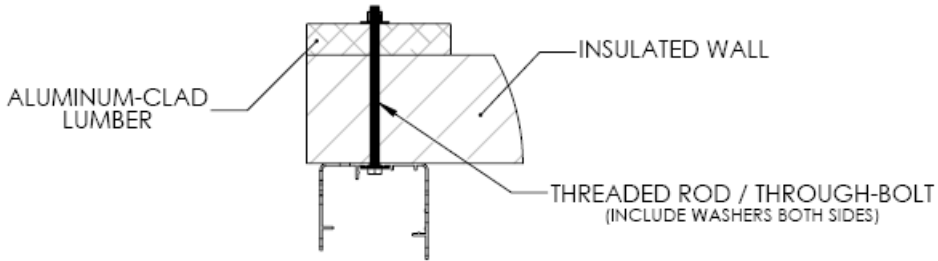
WOOD, BLOCK, BRICK, or INSULATED WALL



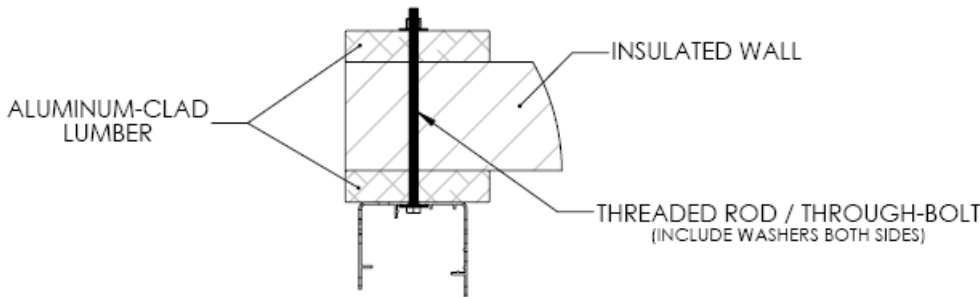
CONCRETE, BLOCK, or BRICK WALL



INSULATED WALL

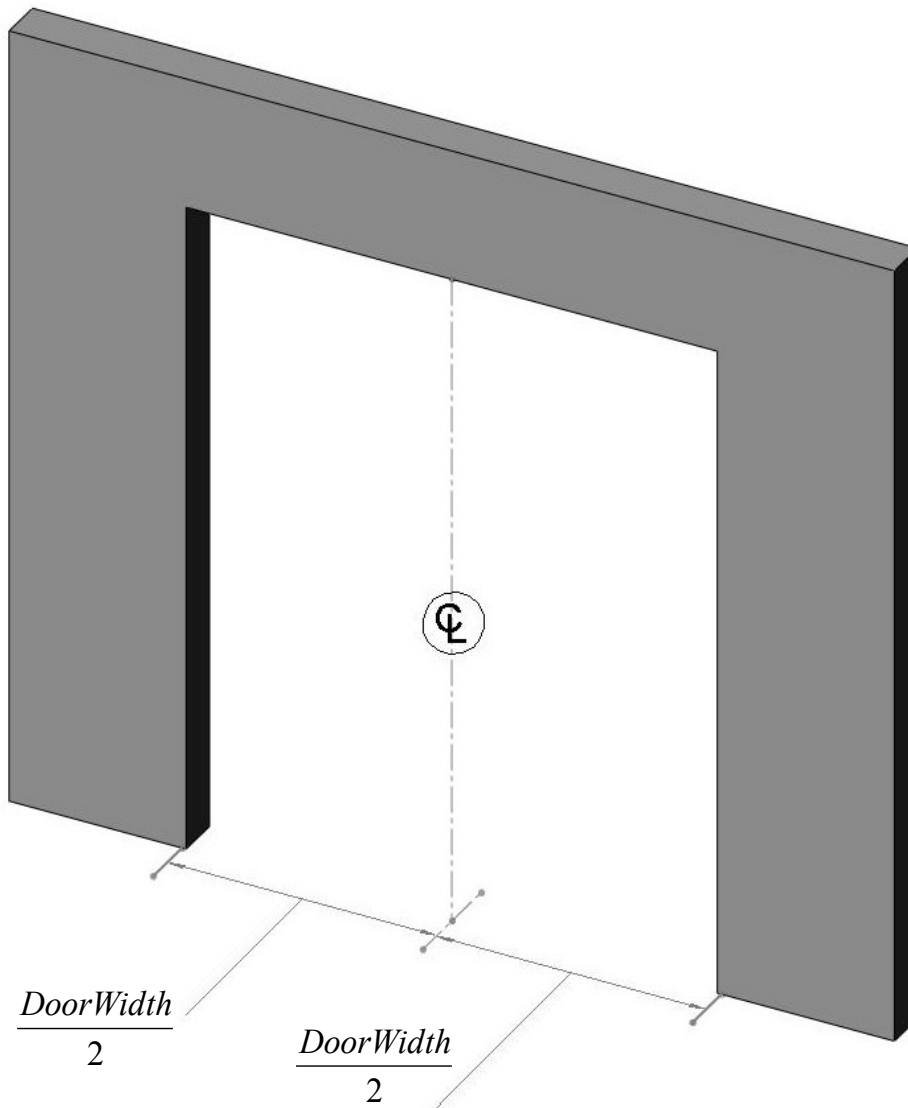


INSULATED WALL

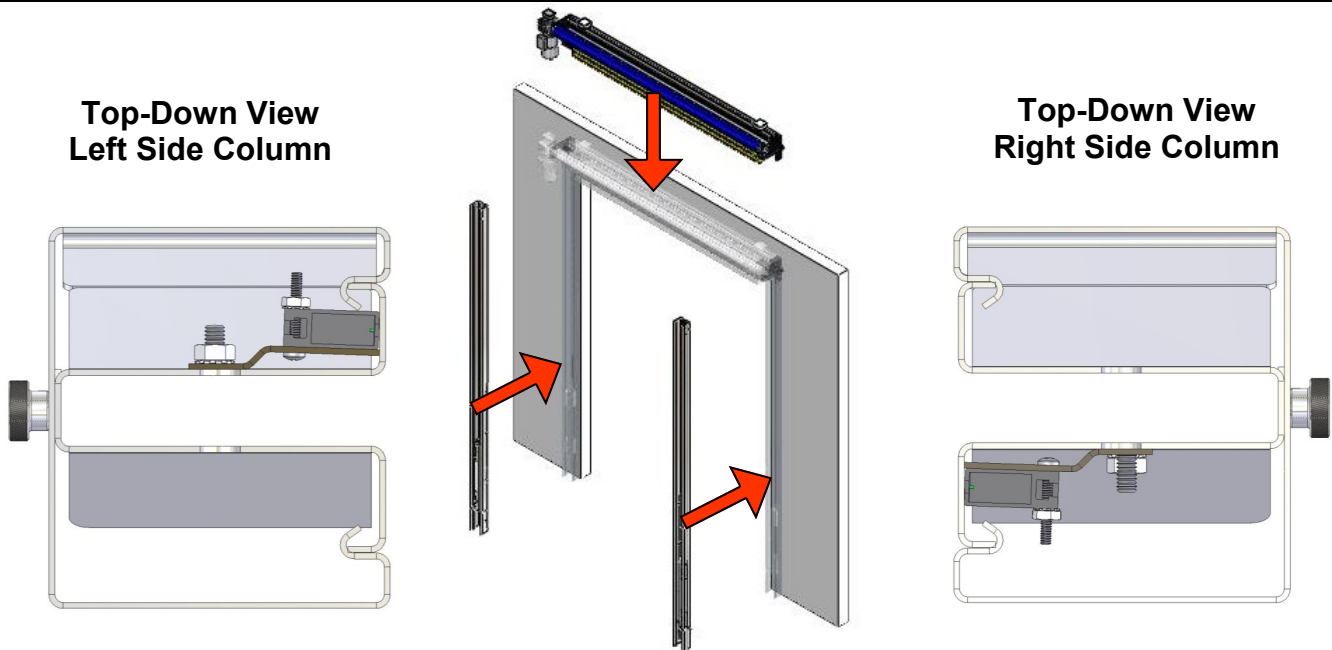


INSTALLATION REFERENCE MARKS

1. Measure from the inside of the left door jamb to the inside of the right door jamb and place a mark on the floor on the door opening centerline.
2. Reference the door's documentation and place two marks on the floor at $\frac{\text{DoorWidth}}{2}$ to the left and to the right of the door opening centerline.
3. Measure the distance between the two new marks. The correct distance should be equal to the ordered door width.



MOUNTING THE DOOR ASSEMBLY



ASSEMBLE ON WALL

1. Hold the left side column in place against the wall. Align the base with the marking placed on the floor earlier and bring the column into plumb.
2. Mark the locations of the mounting holes. Prepare the holes and anchor as needed.
3. Loosely install the anchors, recheck for plumb, and tighten the anchors.
4. Repeat steps 1-3 for the right side column.
5. Lay the head assembly on its back on the floor in front of the door opening. Using a safe lifting device, carefully lift the head assembly up into position above the side columns.
7. Position the drum assembly in front of the side columns with the drum shafts in line with the mounting brackets on the side columns and carefully set it into place.
8. Install the two 1/2" flat washers, lock washers, and 1/2"x1" bolts on each bearing on each side of the head assembly to secure it in place.
9. The photo safety cables are marked and bundled on top of the head assembly at the junction box. Route the light curtain cables through the rear of the side column. Note that the wire will enter the top opening of the left side column, while the right side column utilizes a hole in the side of the column.

CAUTION

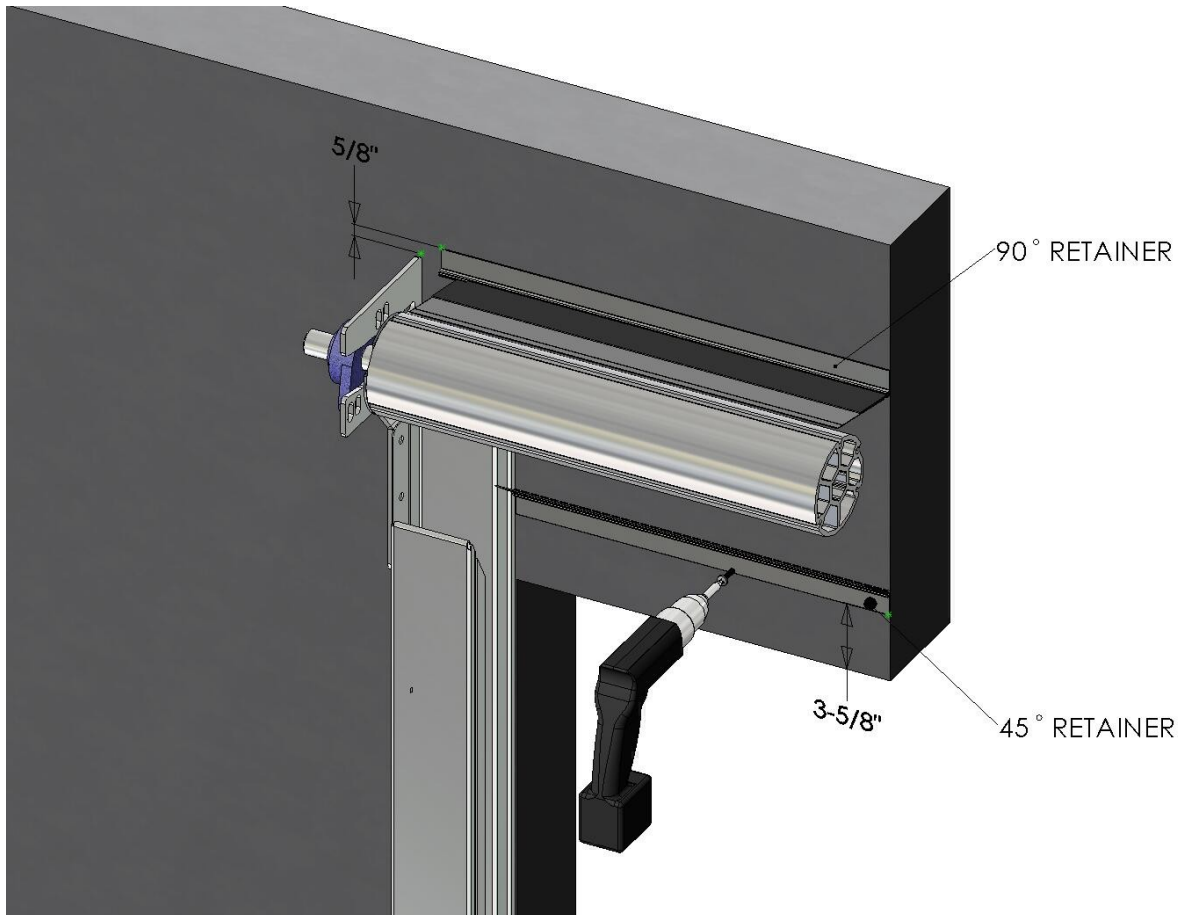


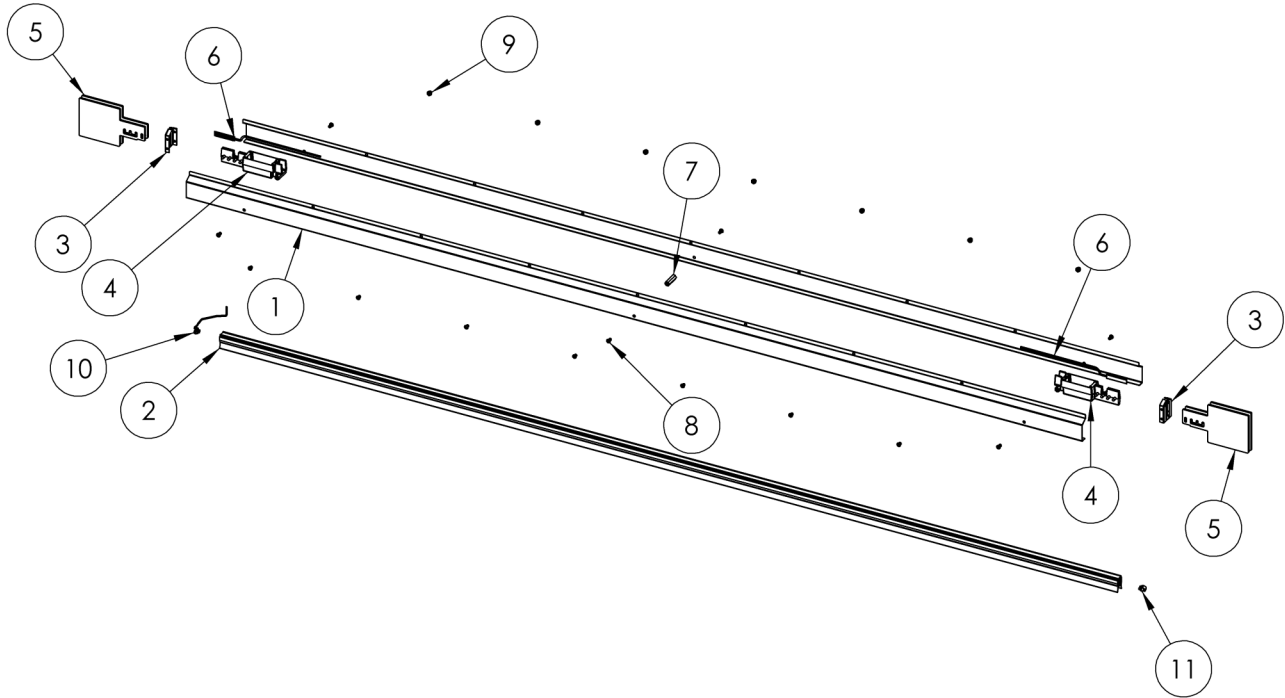
The drum assembly is heavy. Use proper lifting devices and techniques to securely and safely lift the drum assembly. Failure to properly secure the drum assembly could result in death or serious injury.

CAUTION

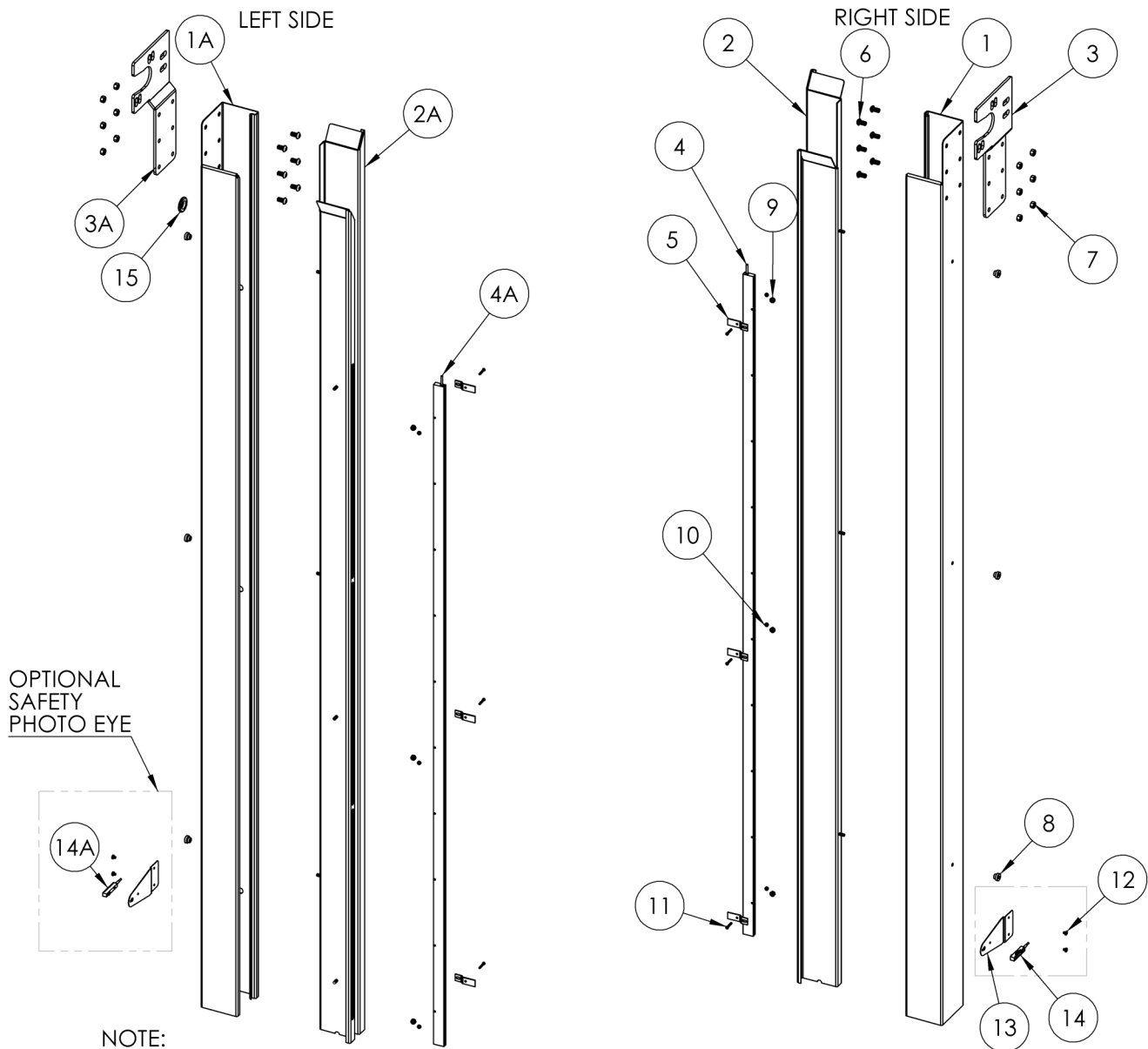
The drum assembly must be lifted level (balanced) and with the motor hanging straight down. Failure to properly position the drum assembly could result in damage to the mounting brackets and/or the side columns.

10. Plug the wires into the appropriate photo device mounted in the column—**note the matching cable markings**. For light curtains, the transmitter will be on the right side and the receiver will be on the left. Ensure that all loose slack in the cables is removed.
11. Set the inner side columns into the outer side columns. If the door was ordered with photo eyes, position the front photo eye mounting brackets against the outside of the side columns and secure them with two self-tapping stainless steel sheet metal screws. Install the knurled hand knobs on the remaining studs protruding through the outside faces of the side columns.
12. Connect the remaining safety cables to the photo safety devices mounted on the outside of the columns and rear side of the door if applicable—**note the matching cable markings**.
13. Install head seals as shown below.
14. Caulk header and door jambs to seal the opening when finished.
15. See the applicable electrical manual for wiring and startup instructions that was included with the door.





ITEM NO.	PART NUMBER	DESCRIPTION
1	001114	BOTTOM BAR HALF
2	001120	REVERSING EDGE WITH FINS ASN
3	001115	BOTTOM BAR END CAP SS
4	CONSULT FACTORY	BLOCK, ENDCAP, BOTTOM BAR, RF
5	001124	BREAKAWAY TAB SS BOTTOM BAR
6	000967	3.5" BREAKAWAY SWITCH LOW SENSITIVITY
7	001122	THREADED SPACER 1/4"-20 X 1.75" HEX SS
8	001123	SOCKET BUTTON HEAD SCREW 1/4"-20 X 1/2" SS
9	001121	ACORN CROWN NUT 1/4"-20 SS
10	001005	PLUG, SAFETY EDGE WITH CABLE
11	001292	PLUG, SAFETY EDGE, 8.2K



NOTE:
LEFT SIDE COMPONENTS ARE THE SAME AS RIGHT UNLESS SPECIFIED.

ITEM NO.	PART NUMBER	DESCRIPTION
1	001109	OUTER SIDE COLUMN RIGHT
1A	001107	OUTER SIDE COLUMN LEFT
2	001108	INNER SIDE COLUMN RIGHT SS
2A	001106	INNER SIDE COLUMN LEFT SS
3	001111	CORNER BRACKET RIGHT SS
3A	001110	CORNER BRACKET LEFT SS
4	001198	LIGHT CURTAIN SG-14 HIGH GAIN TRANSMITTER M12
4A	001199	LIGHT CURTAIN SG-14 HIGH GAIN RECEIVER M12
5	001369	SS LIGHT CURTAIN BRACKET
6	000412	SCREW BH 3/8 - 16 X 3/4" 18.8 SS
7	000256	NUT HEX NYLOCK 3/8 - 16
8	001116	KNURLED KNOB 1/4"-20 SS
9	000423	NUT KEPS 1/4 - 20 18.8 SS
10	000405	NUT KEPS 6 - 32 18.8 SS
11	000419	SCREW PH PAN # 6 X 1" 18.8 SS
12	000403	SCREW TEKS HEW WASHER #12 X 3/4"
13	001211	PHOTO EYE FRONT BRACKET SS
14	CONSULT FACTORY	PHOTO EYE TRANSMITTER
14A	CONSULT FACTORY	PHOTO EYE RECEIVER
15	001465	GROMMET .875" I.D.

Installation Checklist

Please fill out below and return to Albany Door Systems

Customer: _____ Installation Date(s): _____

Location: _____ Door Serial #(s): _____

Contact: _____ Contact Phone #: _____

Install Company: _____ Contact & Phone #: _____

Mechanical Installation (All Doors): **Yes** **No**

- Is the door secured to the wall using thru-bolts? _____
 - If No, what type of anchors were used? _____
- Is the door roll level? _____
- Are the side columns plumb? _____
- Is the door caulked or sealed to the wall? _____
- Are there any visible gaps between the door and the wall? _____
 - If “No” the above, did the customer contact approve of door to wall seal? _____
- Is there any visible damage to the door? _____
 - If Yes, what is the damage: _____
 - Was Albany Customer Service notified of the damage? _____
 - Was the customer contact notified of the damage? _____

Electrical Installation: **Yes** **No**

- Were the factory supplied cables (motor, encoder & 7 – wire) cables long enough? _____
 - If No, which cables were too short? _____
 - If No, was Albany Customer Support contacted and new cables sent? _____
- Were the schematics easy to read for electrical hook-up? _____
- What type of conduit was used to route the cables to the door? _____
- Is the conduit routed to the bottom of the control box? _____
 - If “No” did the customer approve this? _____
 - If “No,” why? _____
 - If “Yes,” who was the customer contact that approved? _____

Door Start-up

Yes No

- Was the door start-up procedure easy to follow? _____
- If No, what problem(s) did you run into? _____

- Was Albany Customer Support Dept. notified of these issues? _____
- Is the Reversing Edge working? _____
- Are the front and rear light curtains (or photo-eyes) working? _____
- Do the bottom bar breakaway switches work? _____
- Does the door's self-repair feature work when the door is broken away? _____
- If the door has counterweights, does the egress work? _____

Activation

- What type of activation is being used? _____
- Was the activation supplied by Albany? _____
- Did the customer approve of the mounting and operation of the activators? _____

Comments



Albany Door Systems - A Company of Albany International Corp. All Rights Reserved
1080 Maritime Drive, Port Washington, WI 53074 - 975-A Old Norcross Road, Lawrenceville, Georgia 30046
262-268-9885 www.albanydoors.com
